






**50 / 32 Mons Road WESTMEAD NSW**

3  2  2 

Bright 3 bedroom unit in quiet, peaceful location. Freshly painted & brand new carpet throughout. Huge open living area. Separate lounge & dining. Enjoy alfresco entertaining & delightful relaxation on extra large balcony with green, leafy setting. Overlooking bush reserve & tranquil parkland.

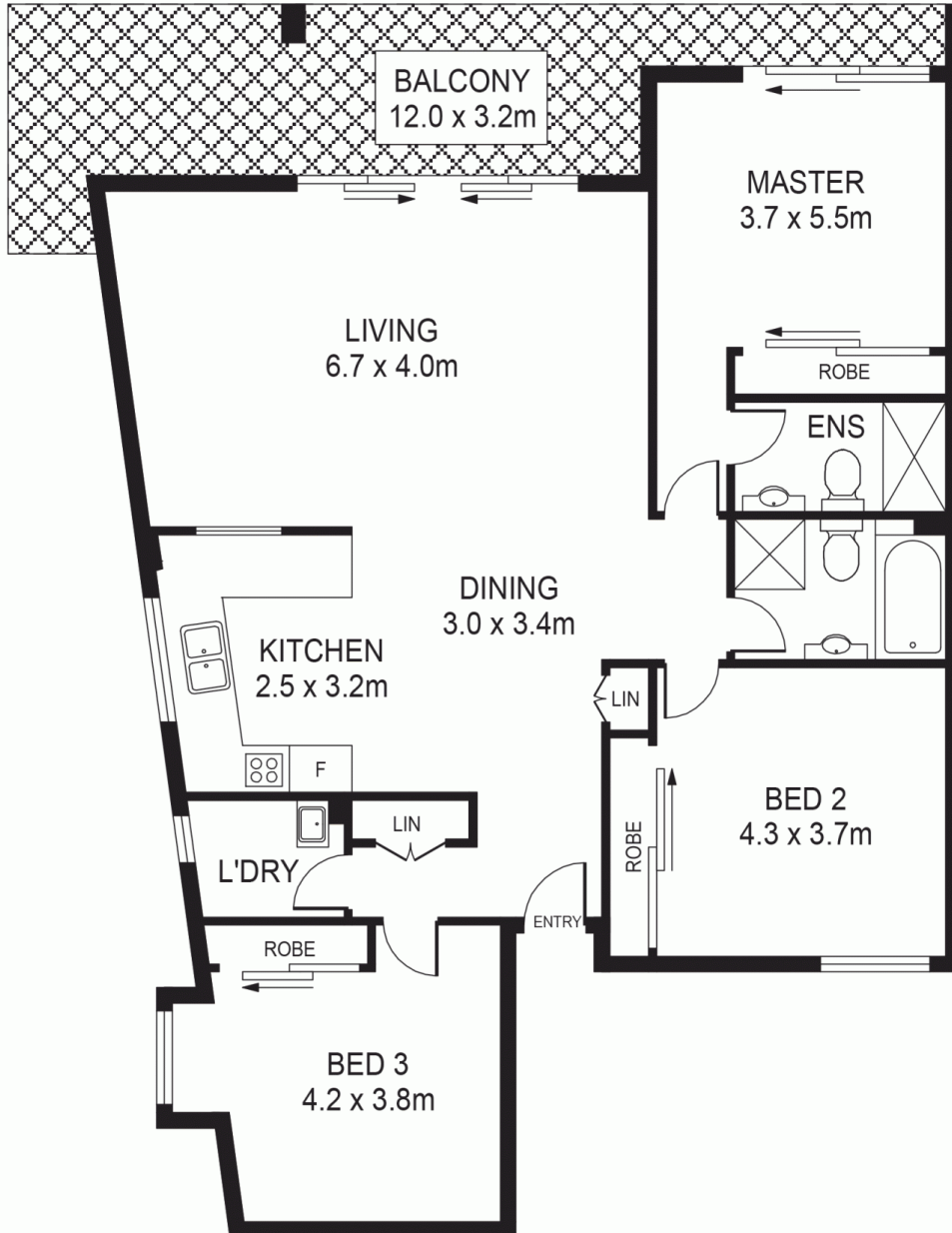
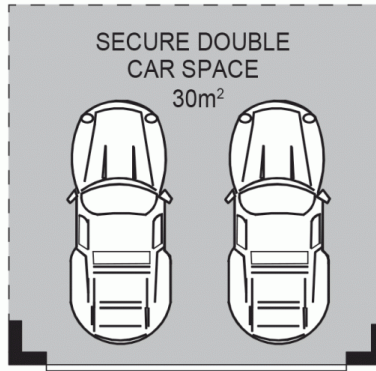
3 large bedrooms. 3 built-in robes. Master bedroom opens to balcony & features ensuite with large shower. Spacious kitchen with Caesar Stone benches, gas cooking & dishwasher. Contemporary bathroom with separate bath & shower. Ducted air conditioning. Plenty of storage space throughout unit. 2 secure car spaces. Security building with intercom and security lift access.

[For full version visit the website](https://www.ddrealestate.com.au)

**Type** : Unit  
**Price** : \$ 575,000  
**Building Size** : 169 sqm  
**View** : <https://www.ddrealestate.com.au/4801448>



**D&D - Commercial Sales and Leasing**  
**02 9687 6555**



## 50/32 MONS ROAD, WESTMEAD

**DISCLAIMER:**

PLANS SHOWN ARE FOR MARKETING PURPOSES ONLY. ALL DIMENSIONS ARE APPROXIMATE AND NOT TO SCALE. THEY ARE SUBJECT TO ERRORS AND INACCURACIES AND NO LIABILITY WILL BE ACCEPTED. INTERESTED PARTIES SHOULD MAKE THEIR OWN INQUIRIES.

